



HAM TIN VILLAS  
PUI O • SOUTH LANTAU



BRAND NEW BEACHFRONT HOUSES IN SOUTH LANTAU

**NOW LEASING**

Telephone: (852) 2844 8361    WhatsApp: (852) 2844 8361    Email: [hamtinvillas@swireproperties.com](mailto:hamtinvillas@swireproperties.com)

















# HAM TIN VILLAS

PUI O • SOUTH LANTAU



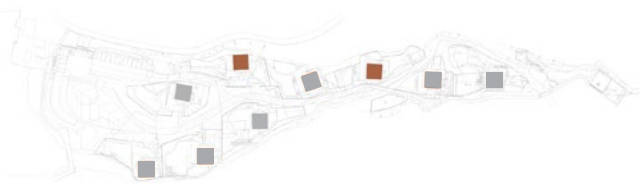
I Banyan Tree



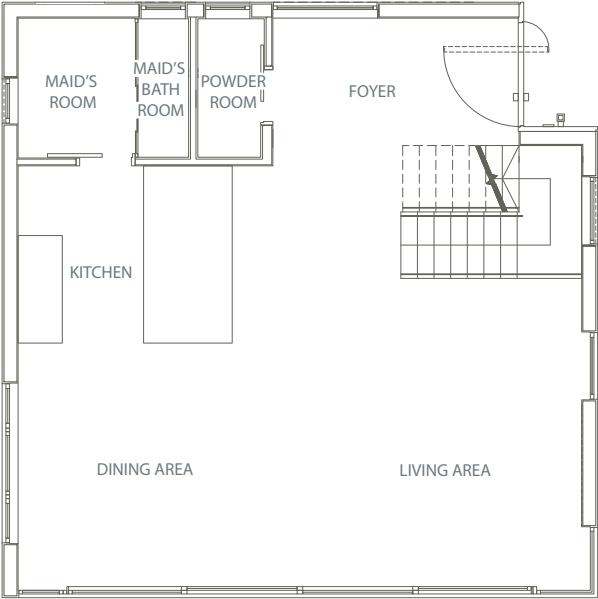
II Creek

# HOUSE 4 & 7

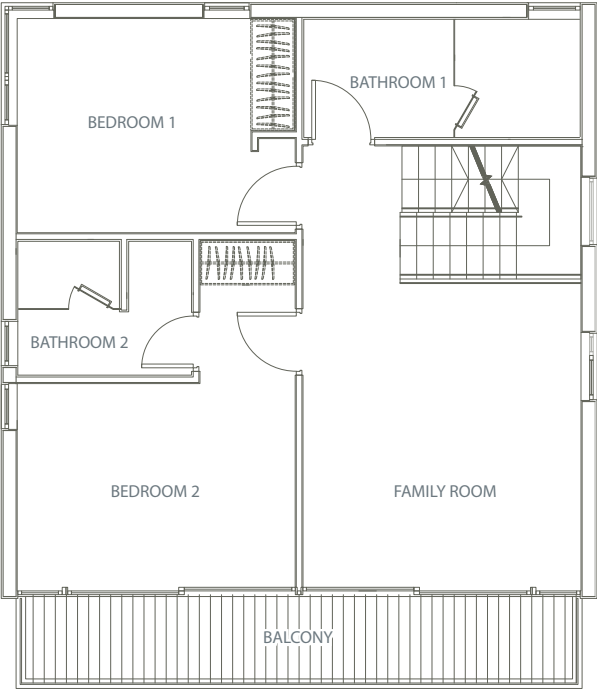
3 Bedrooms with 2 En-suites & 1 Family Room (1,706 sq.ft.)



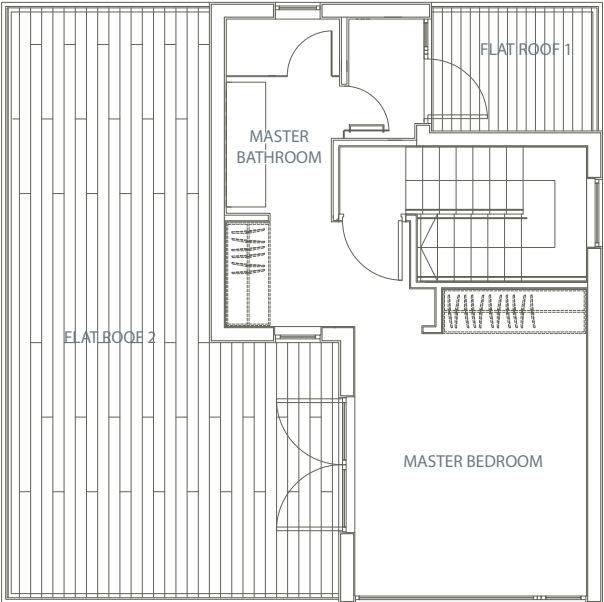
GROUND FLOOR



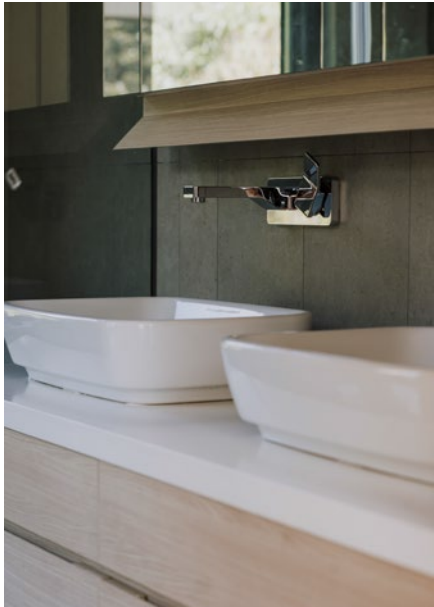
1<sup>ST</sup> FLOOR



2<sup>ND</sup> FLOOR









# HAM TIN VILLAS

PUI O • SOUTH LANTAU

Estimated travelling time from HAM TIN VILLAS

12 minutes to Mui Wo Pier

22 minutes to Tung Chung MTR Station

24 minutes to Hong Kong International Airport

28 minutes to Hong Kong-Zhuhai-Macau Bridge



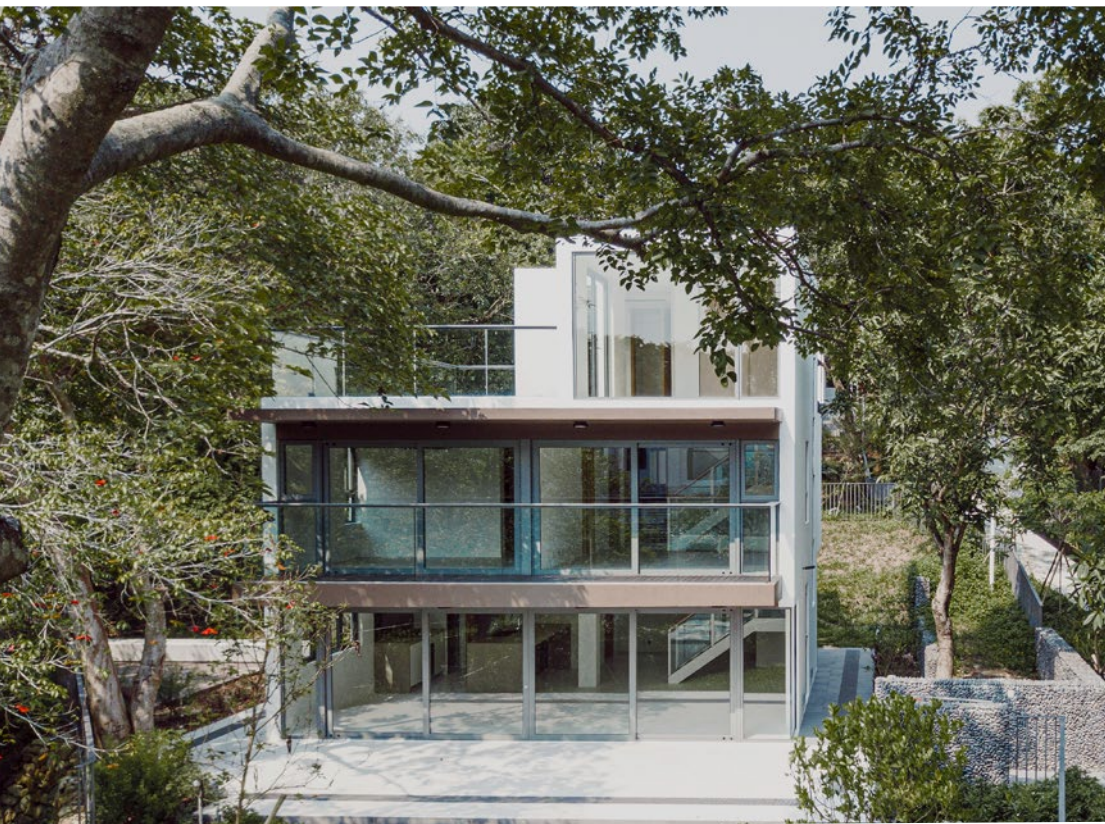
The map above has been simplified and is not drawn to scale. All information is for reference only. Source from Google Maps.





# HAM TIN VILLAS

PUI O • SOUTH LANTAU



A collection of  
**Nine Detached Houses**

House Size and Layout :  
**3 Bedrooms with 2 En-suites & 1 Family Room**  
**3 Bedrooms with 2 En-suites**

Features :

- Fully-fitted open kitchen with branded appliances
- Exceptionally spacious garden and flat roof

Enquiries

Telephone: (852) 2844 8361    WhatsApp: (852) 2844 8361

Email: [hamtinvillas@swireproperties.com](mailto:hamtinvillas@swireproperties.com)

## FOR LEASE<sup>+</sup>

House	Area (sq.ft.)	Garden Area (sq.ft.)	Rental (HK\$)
4	1,706	5,414	\$62,000
7	1,706	5,414	\$62,000

<sup>+</sup> Please refer to the contract for details. Contents in the contract shall prevail under all circumstances.

The information, including but not limited to the renderings, images, drawings or floor plans shown in this leaflet are for identification only. All information contained herein is subject to change without prior notice. The Owner reserves the right for the final decision. In the event of any dispute arising from the information, the cases will be finalized and concluded under the sole discretion of The Owner.

Date of Production: 26 April 2024